



HP4A - 125V - 240V - 50kW Automatic Portable DC Load Bank

BATTERY_loadbank Series which has been designed to combine legacy Hillstone battery load banks such as dual voltage HLB HLD & HPB designs into a small compact range.

The **BATTERY_loadbank Series** provides, high powered constant current discharge testing for 98 cell and 198 cell Ni-Cad battery systems available from the automatic control system.



- **HP4A** range gives **Automatic** constant current discharge testing
- Supplied with the **Varicon** Data Logging Windows PC Software package

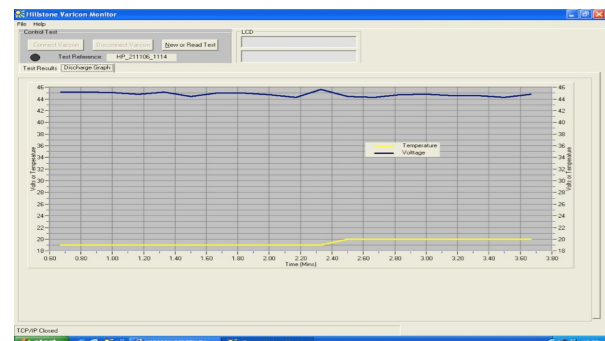
Auto range	Max Rating	End of Test
HP4A-125-240-50	125V – 150A 240V – 210A	99V – 150A 176V – 210A

Varicon Data Logging Software

The **BATTERY_loadbank** range is designed to fully interface with the Hillstone Data Logging Windows PC Software package.

The **Varicon_DLS** is a standalone system which comprises of a hardware interface to connect the load bank with a laptop running Window 10.

The communication protocol between the **Varicon_DLS** and the **BATTERY_loadbank** accesses the discharge test parameters of Voltage, Current, Temperature and elapsed time. This data is then transmitted over 10 base T - TCP/IP to the laptop PC.



The **Varicon_Software** app displays both tabular and graphical data from the discharge in real time, as shown in the screenshot below.

The **Varicon_Software** app assigns test engineer details to each discharge and allows exporting of all the test data to other applications like Microsoft Excel.



BATTERY_loadbank Series	Automatic
User features & controls:-	
Master On / Off control	✓
High powered fans using auxiliary mains supply	✓
Fan ON control	✓
Automatic Constant Current Discharge Controller	✓
Safety features package:-	
Emergency stop push button	✓
Battery isolation from DC rated contactors	✓
Fan cool down period over run at end of discharge	✓
Fan fail with auto shut down	✓
Alarm indication package:-	
High volts	✓
Over temperature	✓
Reverse polarity	✓
Open circuit	✓
Fan fail	✓
LCD Display package:-	
LCD display for Volts & Amps	✓
End of Test Low Voltage Disconnect	✓

Standards and Quality Assurance:

The **Battery_loadbank** range is manufactured in the UK to the following EU standards and ISO QA procedures:

- Low Voltage Directive 2006/95/EC
- EMC directive 2004/108/EC:
 - BSEN61000-6-3 2007 amendments for 2011
 - BSEN61000-6-1 2007
 - BSEN61000-6-4 2007 amendments for 2011

Hillstone Products Quality Assurance procedures ISO9001:2008



Specification

Minimum load step resolution	From 1A		
DC Cable Set	10 metre length M8 solderless lugs to battery & powerlock connectors to load bank		
Construction	Lightweight aluminium case design		
Auxiliary mains	Single phase 100V to 240V AC, 50/60Hz		
Cooling	Forced air cooling, horizontal fans		
Environmental Protection Rating	IP21 for operating in a dry ventilated area		
Movement	Recessed carry handles with swivel castors		
Temperature	Operating: 0 – 40 deg C		Storage: 0 – 80 deg C
Current Transducer*	Accuracy: ± 0.5%		
Voltage Transducer*	Accuracy: ± 0.2%		
Measurement resolution*	12 bit ± 2 LSB		
No of comms ports*	x 2	Data logging port	Parallel link port & 1.5m cable included with load bank
PC comms **	TCP/IP 10 base T		

* Only available with LCD package ** Only available with datalogging

Case Sizes

	Ref	No of fans	Length	Width	Height	Approx. Weight
Case Size 2	HP4	4	780mm	470mm	550mm + castors	45kgs

Notes

- Units are designed for indoor use in a clean, dry and well ventilated environment.
- Information in technical literature, quotations or datasheets are intended to be correct at the time of publication.
- We reserve the right to make detail changes to specification, components, dimensions or weights at the time of design or manufacture without prior notice.
- All designs, software & information is the copyright and intellectual property of Hillstone Products Ltd.